

THREADED INSERT DETAIL

HALF SECTION
AT INTERMEDIATE DIAPHRAGMS

TYPICAL SECTION

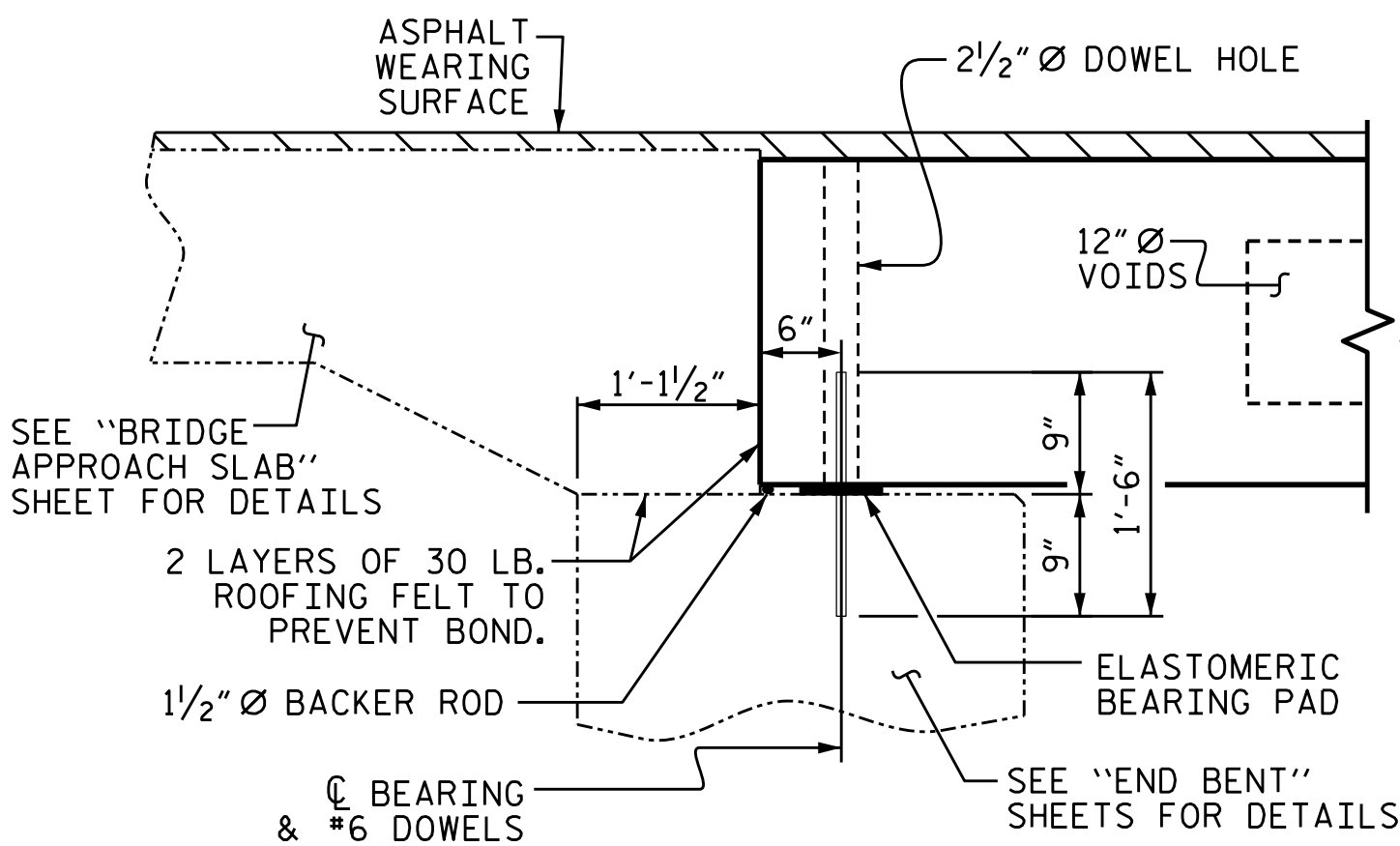
HALF SECTION
THROUGH VOIDS

* - THE MAXIMUM BARRIER RAIL HEIGHT AND ASPHALT THICKNESS IS SHOWN. THE HEIGHT OF THE BARRIER RAIL AND ASPHALT THICKNESS VARIES WHILE THE TOP OF THE BARRIER RAIL FOLLOWS THE PROFILE OF THE GUTTERLINE. FOR RAIL HEIGHT DETAILS AND ASPHALT THICKNESS, SEE THE "VERTICAL CONCRETE BARRIER RAIL SECTION" DETAIL.

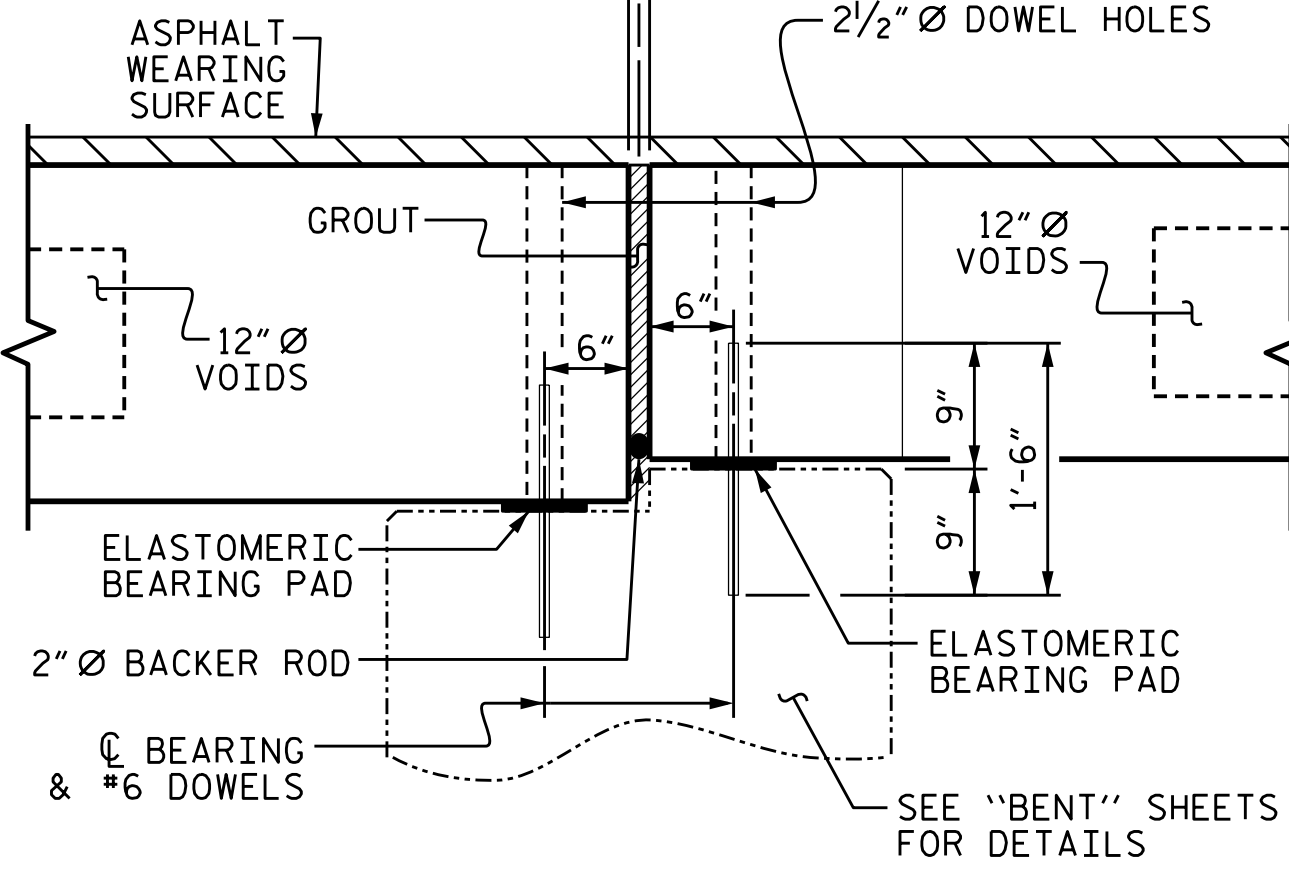
FIXED END

FIXED END

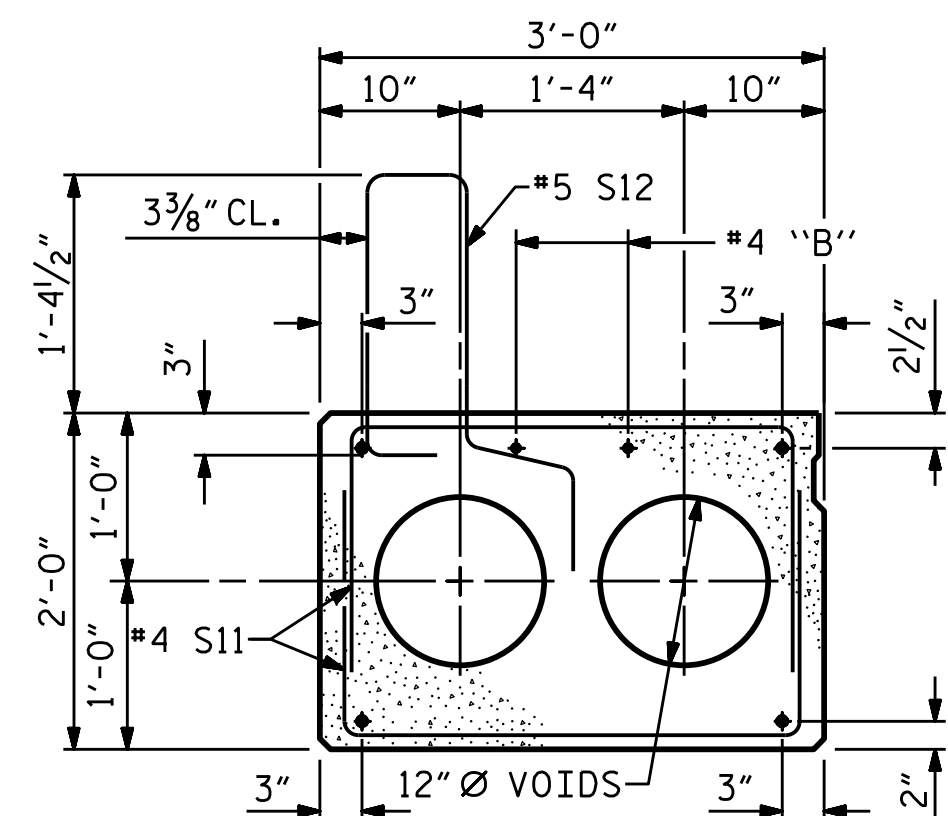
FIXED END



SECTION AT END BENT 1

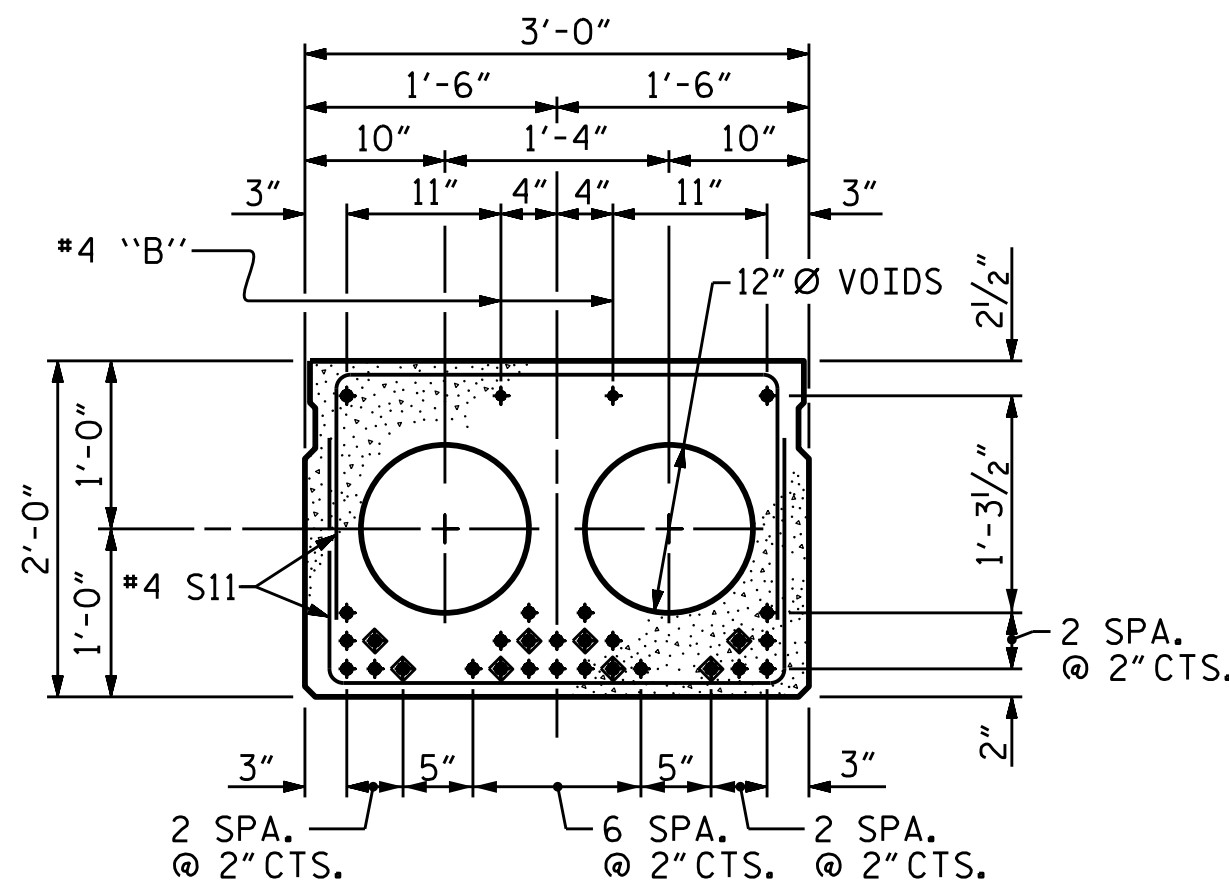


SECTION AT BENT 1



EXTERIOR SLAB SECTION

(FOR PRESTRESSED STRAND LAYOUT, SEE
INTERIOR SLAB SECTION.)



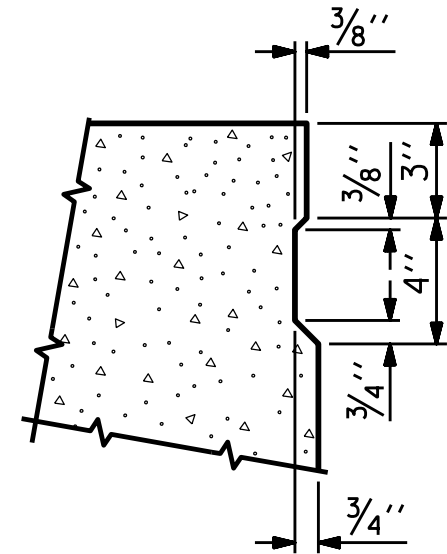
INTERIOR SLAB SECTION (70' UNIT)

(28 STRANDS REQUIRED)

0.6" Ø LOW
RELAXATION STRAND LAYOUT

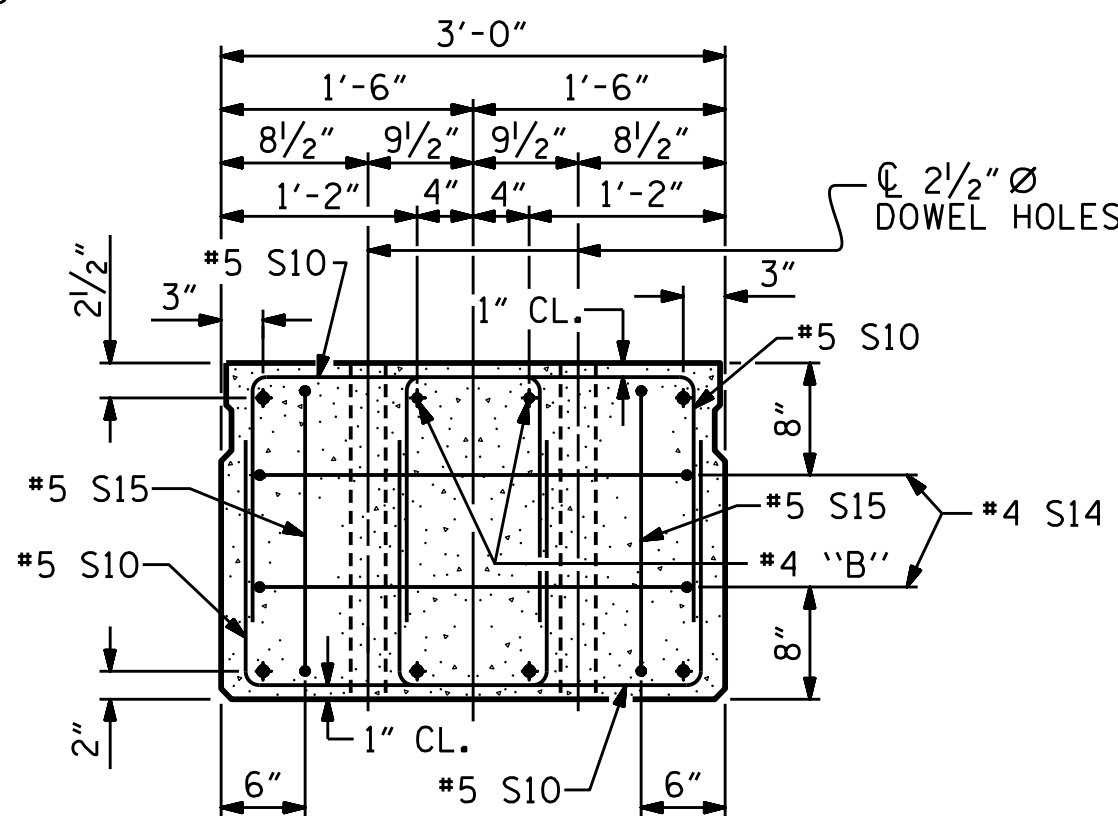
◆ BOND SHALL BE BROKEN ON THESE STRANDS FOR A DISTANCE OF 12'-0" FROM END OF CORED SLAB UNIT. SEE STANDARD SPECIFICATIONS, ARTICLE 1078-7.

DEBONDING LEGEND



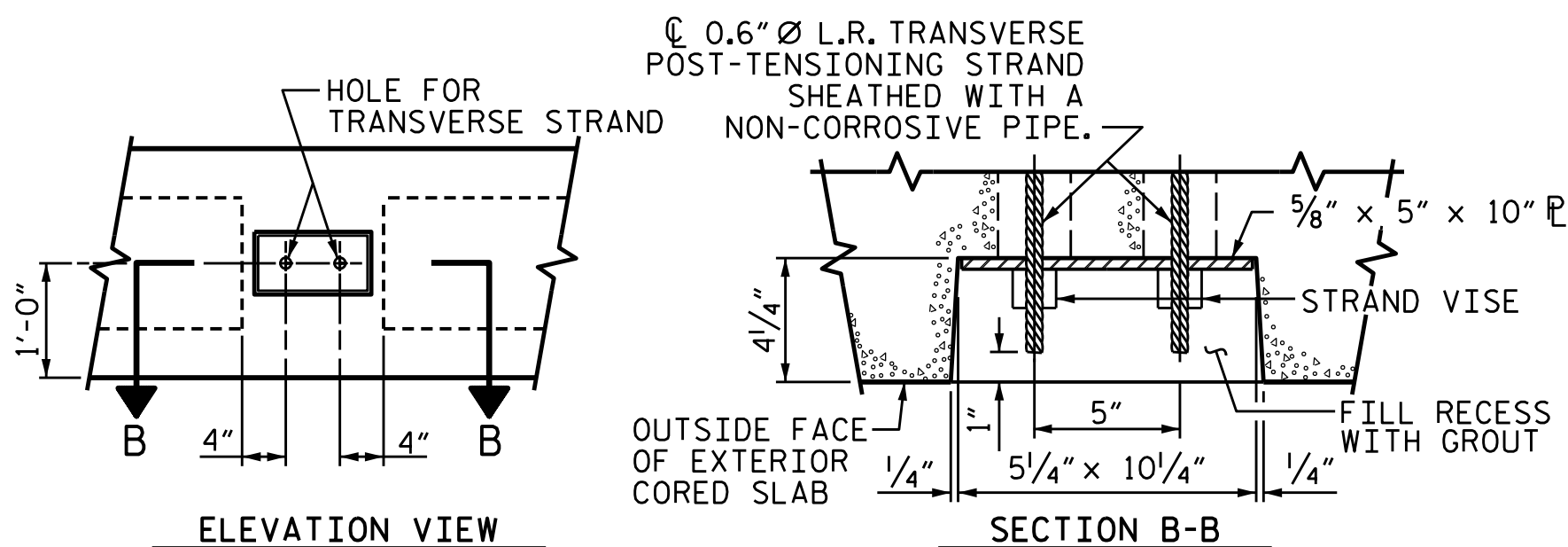
SHEAR KEY DETAIL

NOTE: OMIT SHEAR KEY ON OUTSIDE FACE
OF EXTERIOR CORED SLABS.



END ELEVATION

SHOWING PLACEMENT OF DOUBLE STIRRUPS
AND LOCATION OF DOWEL HOLES.
(STRAND LAYOUT NOT SHOWN.)
INTERIOR SLAB UNIT SHOWN-EXTERIOR SLAB
UNIT SIMILAR EXCEPT SHEAR KEY LOCATION.



GROUTED RECESS AT END OF
POST-TENSIONED STRAND-CORED SLABS



VHB Engineering NC, P.C. (C-3705)
940 Main Campus Drive, Suite 500
Raleigh, NC 27606

DRAWN BY : E.C. PHELPS DATE : 10/2024
 CHECKED BY : W.K. FISCHER DATE : 11/2024
 DESIGN ENGINEER OF RECORD: W.K. FISCHER DATE : 12/2024

1/20/2025
c:\bms\vhb-pw-01\d0193294\401_011_BP14R030_SMU_TS01_S1-06_430046.dgn
ephelps

DOCUMENT NOT CONSIDERED
FINAL UNLESS ALL
SIGNATURES COMPLETED

STATE OF NORTH CAROLINA
DEPARTMENT OF TRANSPORTATION
RALEIGH
STANDARD

STD. NO. 24PCS4_30_90S